



# Empowering Our Workforce: Building a Sustainable Future

**M. Dennis Knight, P.E., BEMP,  
Fellow Life Member ASHRAE,  
2024-25 ASHRAE President**

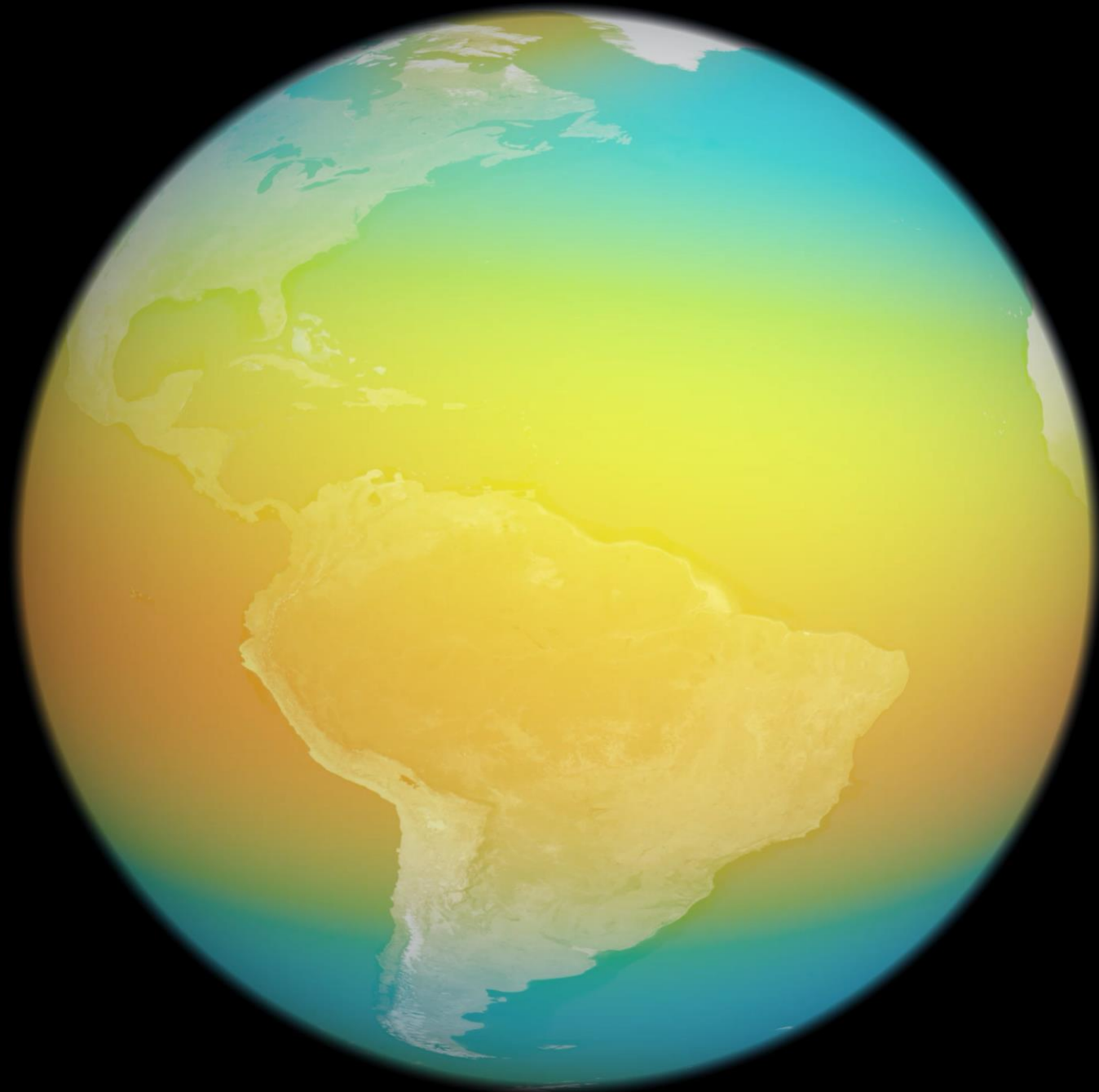


# Celebrating 50 Years of Marriage!



**Ready  
For  
Work!**





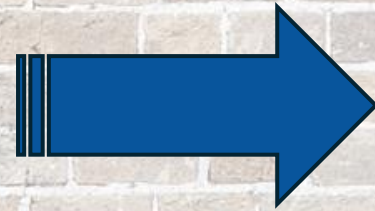
# Solving the Workforce Development Problem

**We need more people like you!**



# Industry Growth

Current Need  
**2 Billion**  
Systems



By 2050  
**6 Billion**  
Systems



**2.5 Trillion square feet of building space  
over 20 years old**  
is currently in need of renovation.



INVESTORS

FORUM INVESTOR

Barth Setty

INVESTORS

and Institute

's Club

Inc.

ards

DAVID  
PRESIDENTIAL  
MEMBER  
ASHRAE  
LOW





**We Can Make a Difference Now!**



15000  
14.400  
12.900

0 10 20 30 40 50 60 70 80 90

0 10 20 30 40 50 60 70 80 90 100 110

430 440 450 460 470 480 490 500

СПАЧА

415

Листы на формат  
А4 (210x297 мм)  
Листы на формат  
А3 (297x420 мм)

Модель № 120  
Листы на формат  
А4 (210x297 мм)  
Листы на формат  
А3 (297x420 мм)

Листы на формат  
А4 (210x297 мм)  
Листы на формат  
А3 (297x420 мм)

Листы на формат  
А4 (210x297 мм)  
Листы на формат  
А3 (297x420 мм)

Листы на формат  
А4 (210x297 мм)  
Листы на формат  
А3 (297x420 мм)

Листы на формат  
А4 (210x297 мм)  
Листы на формат  
А3 (297x420 мм)

Листы на формат  
А4 (210x297 мм)  
Листы на формат  
А3 (297x420 мм)

Листы на формат  
А4 (210x297 мм)  
Листы на формат  
А3 (297x420 мм)

Листы на формат  
А4 (210x297 мм)  
Листы на формат  
А3 (297x420 мм)

Листы на формат  
А4 (210x297 мм)  
Листы на формат  
А3 (297x420 мм)





# Planned Initiatives

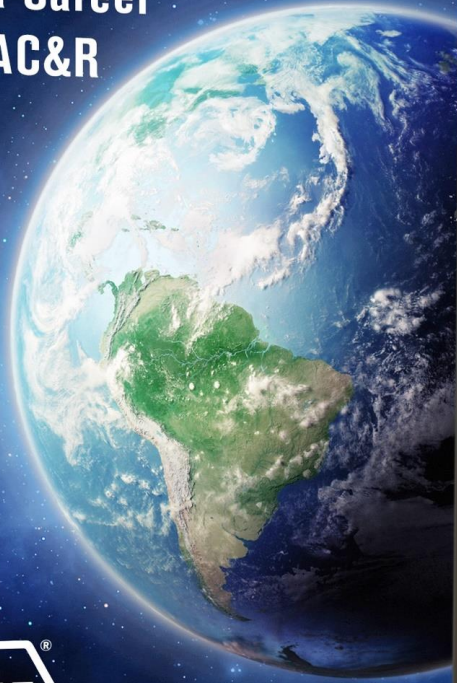
**1** Tools for Career Conversations

**2** Member Resource Groups

**3** Professional Development



**Make a Difference  
with a Career  
in HVAC&R**



# Member Resource Groups

## New Members Club



## Young Professionals with Children







# Industry Summit



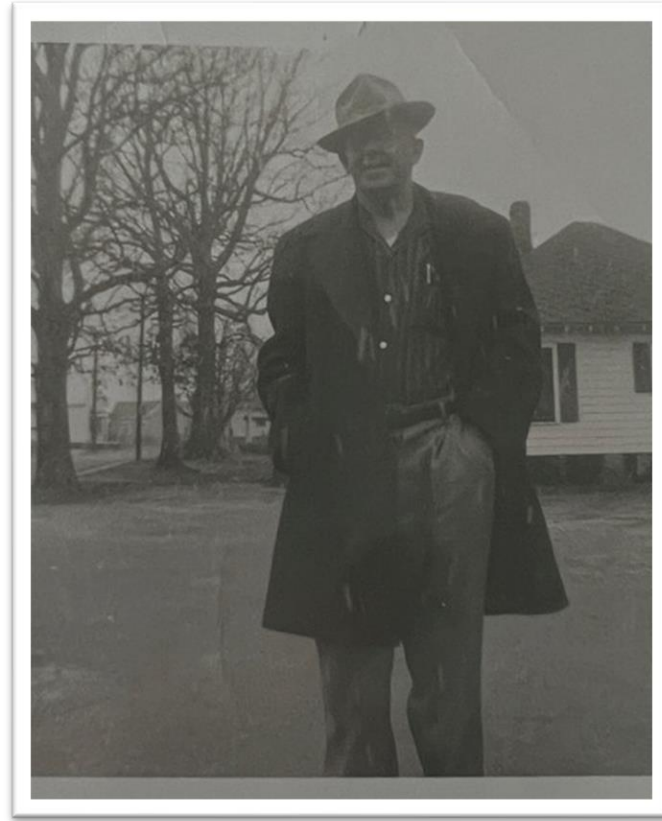
# Continue the Decarb Challenge



# Host Industry Roundtables



# An Evolving Workforce



# Telling Our Stories



## Using BIM In HVAC Design

By Dennis Knight, PE, Florida ASHRAE; Stephen Roth, PE, Florida ASHRAE; Steven L. Basso, Florida ASHRAE

Using a building information model (BIM) for the design of a project from concept and design to construction can increase the value of the project. A BIM's 3D graphics of buildings and systems are generated by data that can be easily changed by the project team using their BIM software. BIM data is often shared between project team members to ensure that all project team members are working with the same data. BIM data is often shared between project team members to ensure that all project team members are working with the same data.

The data that is the heart of a BIM is stored in a central location. It describes an entire building or a specific part of a building. The data includes a project's entire building system, including mechanical, electrical, and plumbing systems. The data is used to create a 3D model of the building and its systems. The data is used to create a 3D model of the building and its systems.

ASHRAE





**Thank you!**



**[ashrae.org/president](https://ashrae.org/president)**